

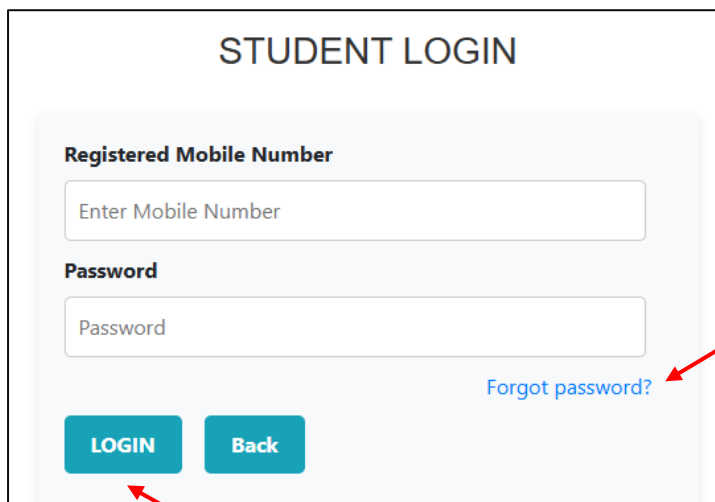
# Bhaskaracharya Mathematical Talent Search Competition (BMTSC) 2024 - 25

## Exam Instructions for Mock Test

Before proceeding with the exam for the Bhaskaracharya Mathematical Talent Search Competition (BMTSC) 2024-25, please carefully read the following instructions:

### 1. Login:

Students can log in to BMTSC using their mobile number and password. If you have forgotten your password, click on 'Forgot Password' and enter your registered mobile number. You will then be able to view your password. If the student registered through a school, please contact the school to obtain your password.



If forgot password, then  
click on forgot password

Click on login using mobile  
number and password

### 2. Student Dashboard:

Click here for Mock Test

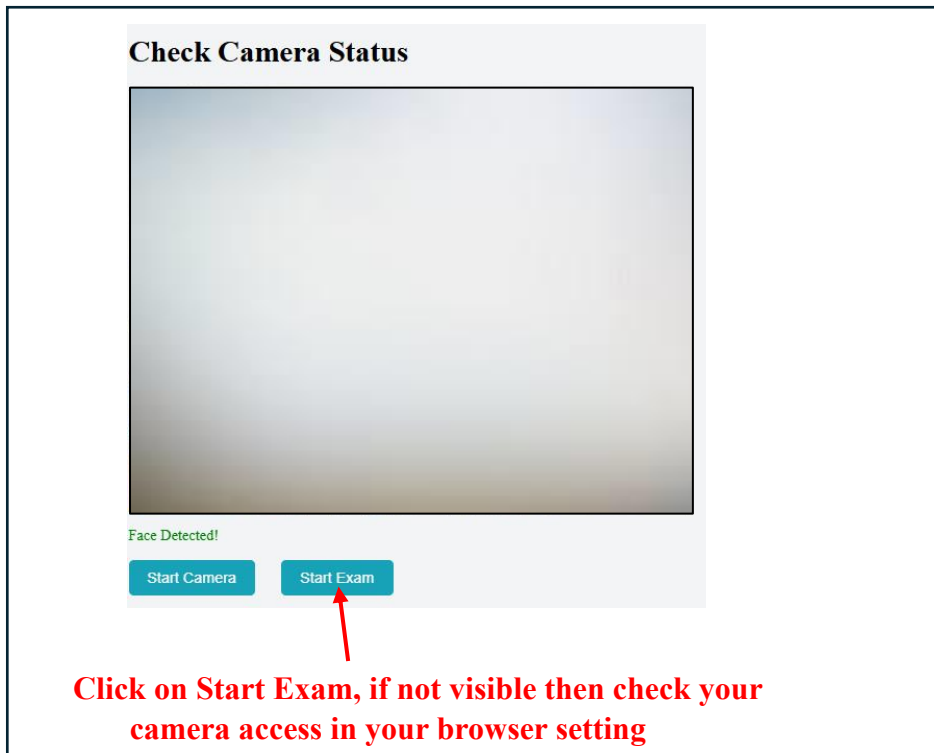
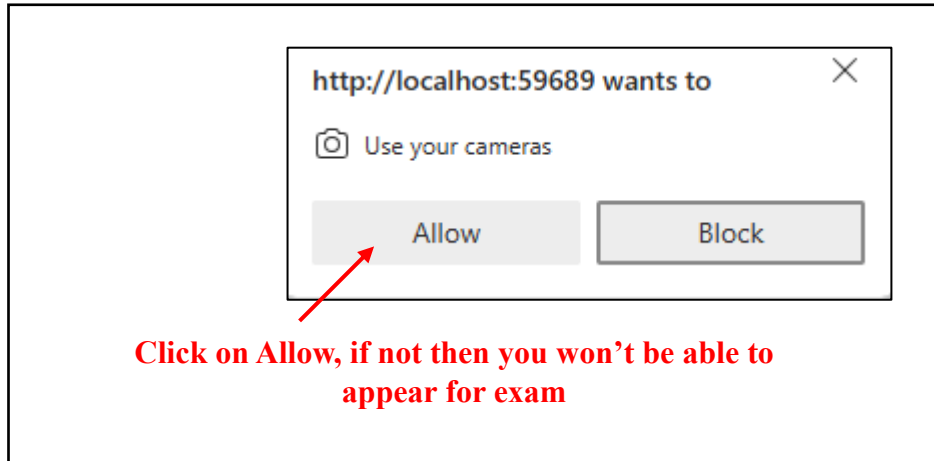
<b>Profile</b> Click here to view your registration details	<b>Exam Details</b> Click here to view the Details of BMTSC Examinations.	<b>Mock Test</b> Mock test will be available from 30th November to 4th December 2024
<b>Round I</b> You will be able to appear for Round-I Exam. by clicking here at the time of Examination.	<b>Round II</b> You will be able to appear for Round-II Exam. by clicking here at the time of Examination.	<b>Logout</b> You can click here to logout.

### 3. Mock Test Instructions:

Mock Test consists of three sections:

- **Section 1 - (10 Marks)**  
True or False: 10 questions, 1 mark each.
- **Section 2 - (20 Marks)**  
MCQ Type (Single Correct Answer): 10 questions, 2 marks each
- **Section 3 - (30 Marks)**  
Two-digit integer Answers: 10 questions, 3 marks each.

#### 1. Camera Access:



#### 2. Window/Tabs Restrictions

- Do not switch windows or tabs during the examination.
- You will receive warnings if you switch.
- If more than 3 warnings are given, the exam will be terminated.
- Please do not **refresh** or **close the browser**. Doing so will result in the termination of your exam.

### 3. Proctoring and Malpractice

- Your exam will be proctored.
- Any form of malpractice is strictly prohibited.
- Click on “Allow” to switch on your camera for proctoring purposes.
- Ensure that your camera remains on throughout the examination.

### 4. Device and Browser Support

- The exam can be taken on mobile phones, laptops, or desktops (should have webcam).
- All browsers are supported.

**(For the best experience, we recommend using a laptop or desktop computer for optimal viewing and ease of use during the examination.)**

### 5. Mobile Usage Restrictions

If you are appearing for the exam through a mobile device, receiving calls, notifications, or switching to another app is restricted.

### 6. Timer and Submission




- The exam timer is set by the server.
- A countdown timer on your screen will display the remaining time.
- The exam will end by itself when the timer reaches zero. You do not need to manually end or submit your exam.

### 7. Exam Procedure

#### Navigating Through Sections

- a. The sections of the exam are shown on the top bar of the screen.
- b. You can view questions in a section by clicking on its name, and the current section will be highlighted.
- c. After clicking *Save & Next* on the last question of a section, you will automatically go to the first question of the next section.
- d. You can switch between sections and questions at any time during the exam as long as it's within the allowed time.

The Question Palette displayed on the right side of the screen will show the status of each question using one of the following symbols:

-  – Yellow colour indicates that you have answered the question.
-  – Red colour indicates that you have visited the question but not answered the question.
-  – Blue colour indicates that you have not visited or not attempted the question.

#### Navigating to a Question:

To answer a question, do the following:

- a. Click on the question number in the Question Palette at the right of your screen to go to that numbered question directly.

**Note that using this option does NOT save your answer to the current question.**

- b. **Click on *Save and Next*:** Save and Move to the next question.
- c. **Click on *Next*:** Go to the next question.
- d. **Click on *Back*:** Go back to the previous question.
- e. **Click on *Clear Response*:** Clear your current answer.

**Answering a Question:**

**Section 1:** Choose one option based on your opinion.

**Section 2:** Answer multiple-choice questions by selecting a single answer from four provided options.

**Section 3:** Enter your two-digit answer in the provided textbox or use the keypad to type your answer.

**8. Submitting the Exam:**

- Your exam will automatically finish when the timer reaches zero.
- If you wish to submit your exam before the timer ends, click on Submit.